



CENTRAL MACHINE & FABRICATION

Division of Central Industrial Supply, Inc.



P.O. BOX 210

**250 SPRING DRIVE & HIGHWAY 25 SOUTH
MONTEVALLO, ALABAMA 35115**

**ROLLER MILL PARTS & SERVICE
STEEL FABRICATION • MACHINE WORK
EQUIPMENT & MACHINERY REPAIR
CONVEYORS • CHUTEWORK**

205-665-4516 • FAX: 665-4518

1-888-665-4516

www.centralmachineandfab.com

HISTORY

Central Machine and Fabrication, a division of Central Industrial Supply, Inc., was established and incorporated under the laws of the state of Alabama in 1976. The company has been at its present location in Montevallo, Alabama since 1979. We are a manufacturing facility providing a full range of fabrication and machining services from materials including steel, stainless steel, aluminum, and alloys. Our services are concentrated in the cement, lime and pulp & paper, and steel industries.

With our manufacturing capabilities we have built complete material handling systems, custom designed machinery and equipment as well as structural and platework projects. We have built an extensive background in repairing and rebuilding a broad range of industrial equipment and machinery such as roller mills, crushers, screening equipment, and foundry machinery. Our well equipped facility exceeds 25,000 square feet of manufacturing area. This area is serviced by 5 overhead cranes ranging from 3 ton to 10 capacity. Our facility is complimented by approximately 25 skilled, innovative and quality minded employees.

No job is too large or small. We are dedicated to offer our clients quality work at a competitive rate that will allow them to remain competitive in their business.

PARTIAL LISTING OF CUSTOMERS

IMERYS PIGMENTS & ADDITIVES

CHEMICAL LIME CO.

FRANKLIN INDUSTRIAL MINERALS

CERTAINTED CORPORATION

GLOBAL STONE

TAMKO ROOFING PRODUCTS

GEORGIA GULF SULPHUR

KENTUCKY-TENNESSEE CLAY

WADE SAND & GRAVEL

FESCO INTERNATIONAL, INC.

LA FARGE

CARMEUSE LIME & STONE

SEAMAN TIMBER COMPANY

ALABAMA RIVER PULP

CORPS OF ENGINEERS

BE & K CONSTRUCTION CO.

RSG, INC.

ALABAMA POWER COMPANY

TEKSID ALUMINUM COMPONENTS

ALABAMA BRIDGE BUILDERS

VULCAN MATERIALS

WEYERHAEUSER

MACLEAN POWER SYSTEMS

HUBBELL POWER SYSTEMS

INTERNATIONAL PAPER CO.

U.S. PIPE & FOUNDRY

25,000 SQUARE FEET MANUFACTURING FACILITY

SERVING THE CEMENT, LIME AND PULP & PAPER, AND STEEL INDUSTRIES SINCE 1976

MACHINERY LIST

LATHES

34" x 240" VDF
21/32 x 120" Colchester
15" x 50" Jet
21"/33" x 120" Tarnow
17" x 80" Colchester
16" x 60" Colchester
16" x 60" Monarch
20" x 60" CNC Lathe
30" x 120" CNC Lathe

MILLS

#4 Horizontal
#3 Universal
Cincinnati Universal
New Port Universal
48" x 168" Planer Mill
52" Vertical Boring Mill
72" Vertical Boring Mill
120" Vertical Boring Mill
3" Horizontal Boring Mill
4" Horizontal Boring Mill
5" Horizontal Boring Mill
20" x 40" Mazak CNC Mill
22" x 50" CNC Mill

MISCELLANEOUS

1 1/4" Keyseater
16" Hydraulic Shaper
6" x 18" Surface Grinder
9" x 18" Horizontal Band Saw
36" Vertical Band Saw
250 Ton Forcing Press
100 Ton Forcing Press
60" Radial Arm Drill
84" Radial Arm Drill
250 Ton Horizontal Wheel Press
2" Pipe Threader

FABRICATION EQUIPMENT

16' 650 Ton Press Brake
12' 300 Ton Press Brake
10' x 1/2 Plate Shear
10' x 1/2 Plate Roll with Angle Attach.
80 Ton Hyd. Web Punch
100 Ton Hyd. Flange Punch
60" Pipe Burning Machine
36" Template Burning Machine
10' Portable Track Burner
Arc-Gougers

Mig Welders
Tig Welders
Sub-Arc Welders
Welding Positioner
Welding Manipulator
Conventional Welders
Plasma Burner 100 AMP
1 Bridge Crane 6,000 #Cap
2 Bridge Cranes 10,000 #Cap
2 Bridge Cranes 20,000 #Cap

**** PICK UP & DELIVERY AVAILABLE**

PLATEWORK & SUPPORT STEEL FABRICATION EQUIPMENT FABRICATION & RE-BUILDS

MACHINE WORK

CNC
CONVENTIONAL
GRINDING
KEYSEATING
BORING
TURNING
MILLING
DRILLING

FABRICATION

PLATEWORK
SUPPORT STEEL
CONVEYERS
CHUTEWORK
DUCTWORK
HOPPERS
SILOS
BINS

WE DO REPAIR WORK ON:

RAYMOND ROLLER MILLS
* Mill Bases
* Mill Bottoms
* Gear Housings
* Journal Parts, Etc.
BOWL MILLS
FOUNDRY EQUIPMENT
VIBRATING SCREENS

QUALITY • SERVICE • DEPENDABILITY • 24/7

***** FAX US YOUR REQUEST FOR QUOTATION & COMPARE OUR PRICES *****

SHOP EQUIPMENT



4" HORIZONTAL BORING MILL



48" X 168" PLANER MILL



**PLATE SHEAR 1/2" X 120"
12' 300 TON PRESS BRAKE
16' 650 TON PRESS BRAKE**



120" VERTICAL BORING MILL



5" HORIZONTAL BORING MILL



LATHES



34" X 240" VDF LATHE

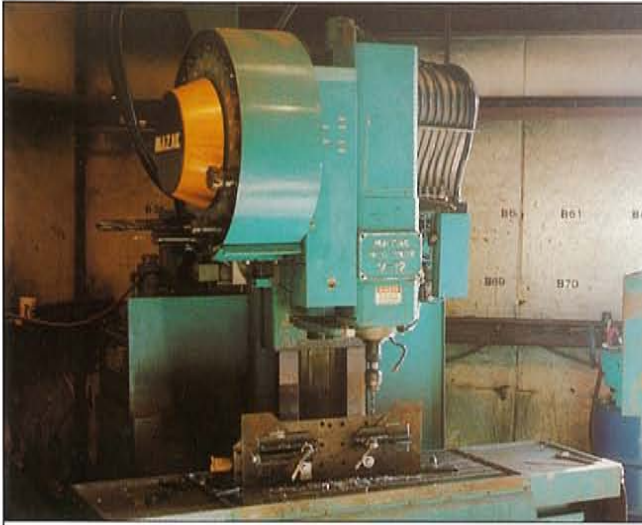


PLATE ROLL 1/2" X 120"

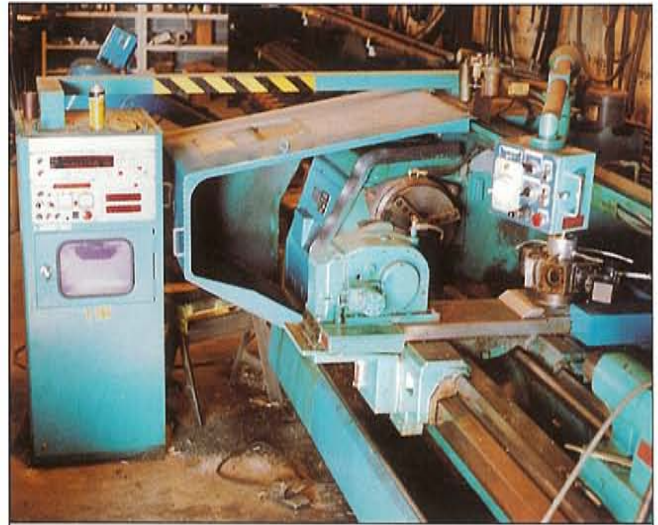


PUNCH/SAW LINE

CNC EQUIPMENT



20" X 40" MAZAK CNC MILL



20" X 60" MAZAK CNC LATHE



22" X 50" CNC MILL



30" X 120" CNC LATHE



CENTRAL MACHINE & FABRICATION



SINCE 1976

P.O. BOX 210 • MONTEVALLO, ALABAMA 35115
PH. 205-665-4516 • 1-888-665-4516 • FAX 205-665-4518

RAYMOND® ROLLER MILL REPLACEMENT PARTS AND SERVICES 73" 66" & 50" ROLLER MILLS

PARTS

Plow Holders
Plow Bodies
Plow Tips
Port Liners
Journal Shafts
Journal Heads
Upper Journal Housings
Lower Journal Housings
Bushings
Wear Rings
Grinding Rolls
Roll Bolts
Gaskets
Mill Shafts
Mill Bottoms
Bull Rings
Spiders
Return Air Housings
Mill Side Assembly
Etc.

SERVICES

In stock replacement parts
Repair bushing fits in mill bottoms
Machine & install wear liners in mill bottoms
Repair bull ring fit in mill bases
Rebuild journals
Repair bushing fits in gear housings
Hard surfacing of wear parts

**Also available: Whizzer housings, plates, & blades
Mill feed conveyors, ductwork, chutework, etc.**

**CALL OR SEND FAX TO SALES FOR INFORMATION AND PRICES
OR EMAIL: warren@centralmachineandfab.**

ROLLER MILL PARTS & SERVICES



**50" MILL BOTTOM CASTING
READY TO BE MACHINED**



**50" MILL BOTTOM CASTING
BEING MACHINED**



**REPAIRING BUSHING FIT & REPLACING
WEAR PLATES IN 73" MILL BOTTOM**



REPAIRED 73" MILL BOTTOM



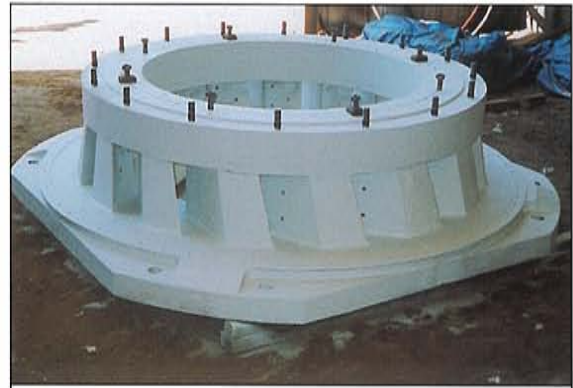
73" RAYMOND® ROLLER MILL GEAR HOUSING BEING REPAIRED



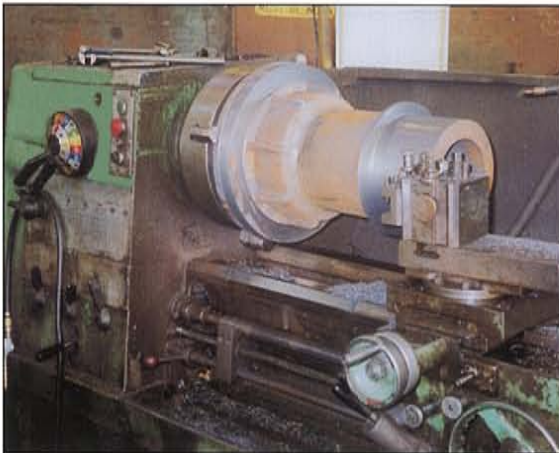
ROLLER MILL PARTS & SERVICES



**MACHINING SLEEVE FOR 73"
RAYMOND® ROLLER MILL BASE**



**SLEEVE AND BULL RING
ASSEMBLED IN BASE
READY TO SHIP BACK TO CUSTOMER**



**73" UPPER JOURNAL HOUSING
CASTING**



**50" & 66" JOURNAL HEAD
CASTINGS READY TO BE MACHINED**



**REPAIRED JOURNAL HEADS
FOR 73" MILL**



**REPAIRED 50" MILL
GEAR HOUSING**

ROLLER MILL PARTS & SERVICES



**66" JOURNAL SHAFTS MACHINED &
READY TO SHIP OUT TO CUSTOMER**



**MISC. ROLLER MILL PARTS,
BUSHINGS, OIL PUMP, ETC.**



**FABRICATED SPIDER PLATE FOR
73" RAYMOND® ROLLER MILL**



**50" & 66" BULL RINGS
IN STOCK - READY TO SHIP**



**REPAIRED 73" MILL GEAR HOUSING
REPAIRED 66" PLOW SUPPORT
NEW FABRICATED WHIZZER SECTION**



**MISC. ROLLER MILL PARTS REPAIRED
AND ON THE WAY BACK TO CUSTOMER**

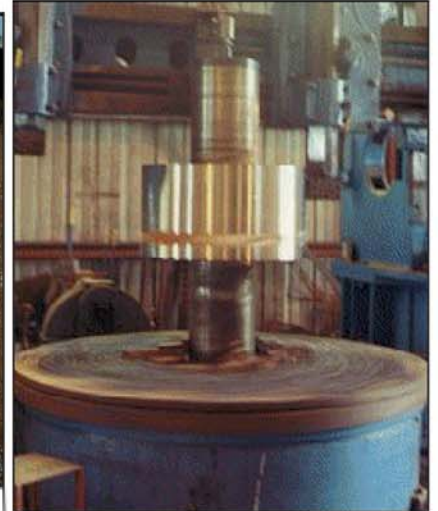


**WIND BOX & HIGH WALL FOR 50"
RAYMOND® ROLLER MILL**

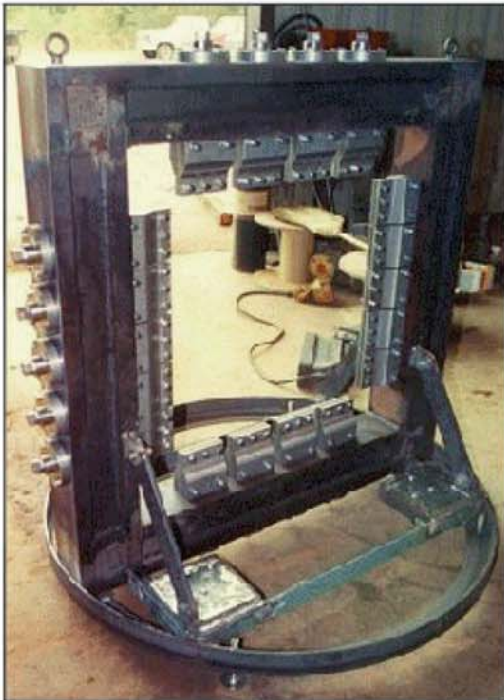
MACHINE WORK



MACHINED ALUMINUM CASTINGS



**MACHINING TRUNNION
ROLL FOR A LIME KILN**



IMPACT TEST JIG



GUIDE WHEELS FOR MOORING BITS



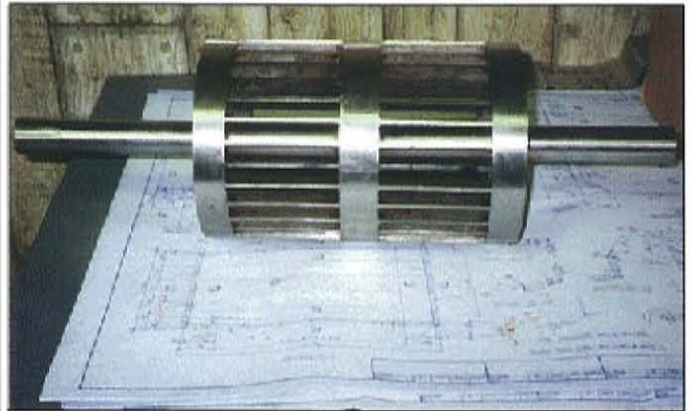
**HEADSHAFT DRIVE ASSEMBLY FOR
BUCKET ELEVATOR**



CHIPPER FEED ROLL



MACHINING ACS-80 CLASSIFIER ROTOR



STAINLESS STEEL ACS-15 TD ROTOR



ACS-50 TD CLASSIFIER



**ACS-50 TD ASSEMBLED & TEST RUN
FOR CUSTOMER**



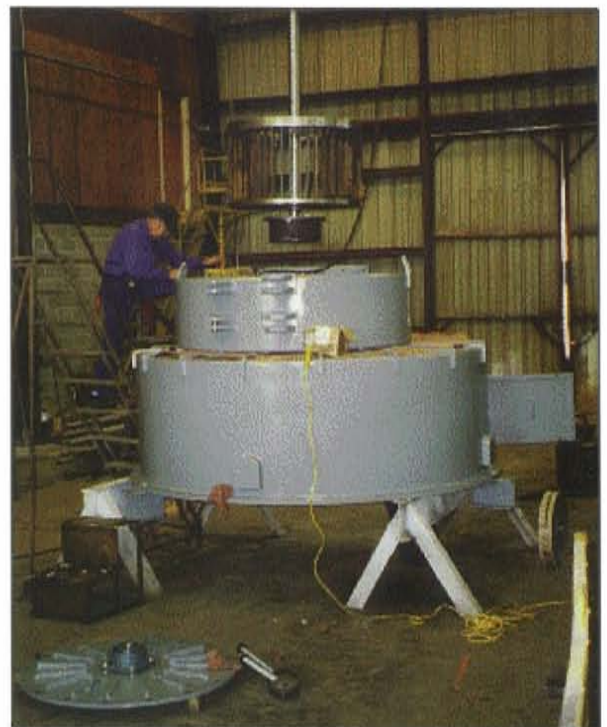
ACS-80 CLASSIFIER



**CLASSIFIER HOUSINGS BEING SET UP TO MACHINE &
ASSEMBLY OF CLASSIFIER ROTOR**

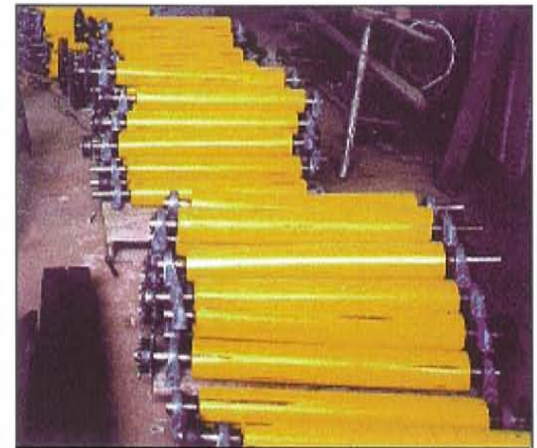
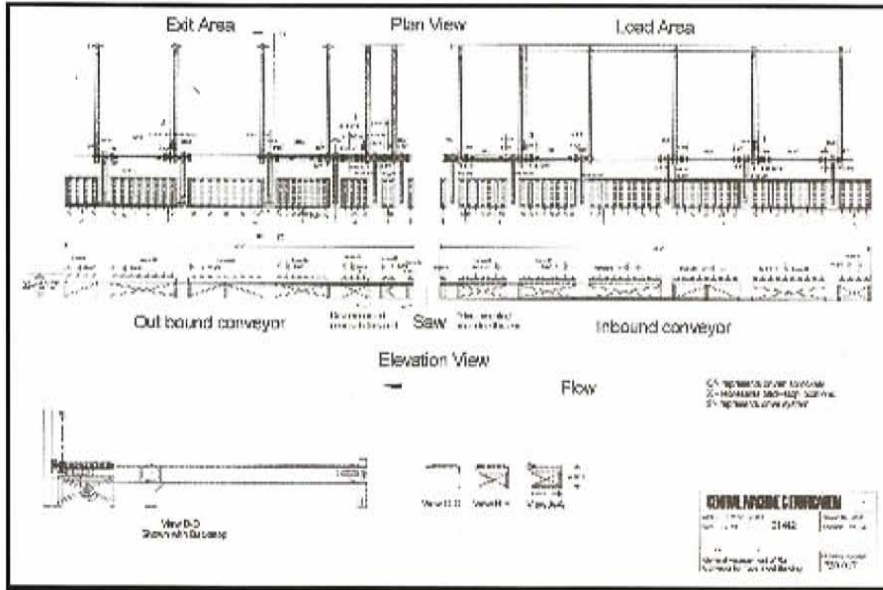


**MCS-500 & MCS-750 CLASSIFIERS
READY TO SHIP**



ASSEMBLY OF MCS-350 CLASSIFIER

MATERIAL HANDLING SYSTEM FOR STEEL SERVICE CENTER



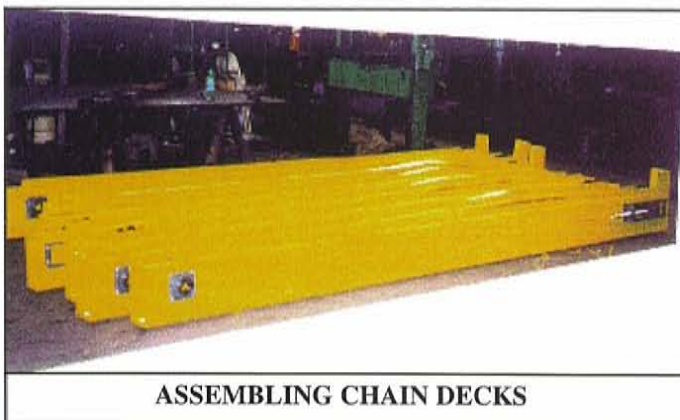
**CONVEYOR ROLLS ASSEMBLED
WITH BEARINGS**



FITTING & WELDING CONVEYOR FRAMES



ASSEMBLING ROLLS TO CONVEYOR FRAMES



ASSEMBLING CHAIN DECKS



CHAIN DECKS READY TO SHIP TO CUSTOMER



SCREENING TOWER



8' X 60' CONVEYOR SUPPORT COLUMN



SCRUBBER STACK & CONE BASE



ROCKBOX CHUTE



CHUTEWORK



FEED HOPPERS



CEMENT SILO



CYCLONE



CURVED CONVEYOR SECTION FOR RADIAL STACKER



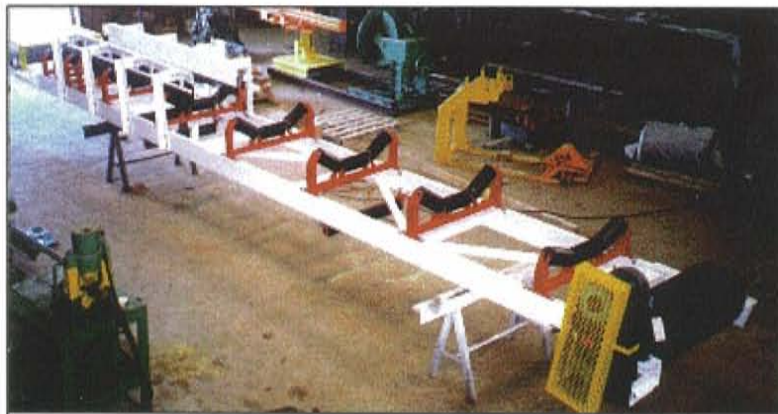
CONVEYOR HEAD CHUTE



SLIDER BELT CONVEYOR



SPLITTER CHUTE



BELT CONVEYOR



SCREEN CHUTES BEING LINED WITH UHMW



SHIPPING FABRICATED SCREEN CHUTES



**FOUNDRY CORE BLOW MACHINE AFTER
BEING REBUILT & UPGRADED**



**RAIL WHEEL TREAD QUENCH MACHINE BUILT
PER CUSTOMER DESIGN**



250 SPRING DRIVE & HIGHWAY 25 SOUTH

205-665-4516 • FAX: 665-4518

1-888-665-4516

www.centralmachineandfab.com

DIRECTIONS

FROM BIRMINGHAM

I-65 SOUTH TO STATE 25 (EXIT 228) - **21 MILES**

SOUTH ON STATE 25 TO CALERA - **1 MILE**

SOUTH ON STATE 25 TO MONTEVALLO - **6 MILES**

LEFT ON SPRING DRIVE (2ND LEFT PAST S.R. 119 INTERSECTION)

